



BACHELOR OF ARTS IN SOCIAL CARE



FOLLOW US:



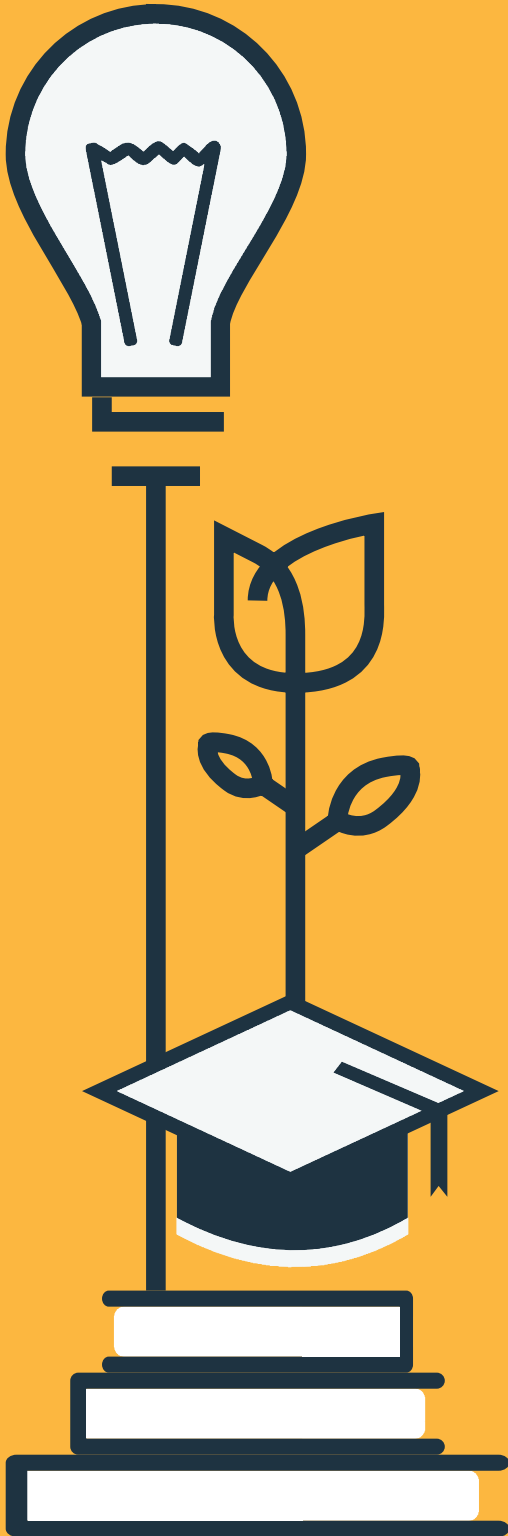
twitter.com/myotc



facebook.com/theopentrainingcollege



linkedin.com/company/open-training-college/

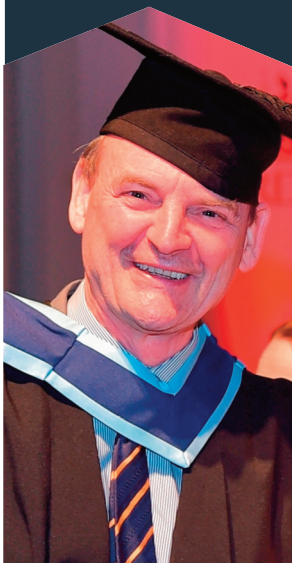


WHAT SUPPORTS ARE PROVIDED

- ✓ Dedicated tutor throughout
- ✓ Online international award winning learning resources developed for online learning
- ✓ Access to learning technologies such as a virtual environment
- ✓ Tools to support virtual learning and off campus learning
- ✓ Online activities to support assessment
- ✓ Face to face lectures, seminars, tutorials
- ✓ Assessment submitted, marked and returned to learners with feedback through electronic or other media
- ✓ Supervised practice placement and Student Support Services



THE LEARNER EXPERIENCE



From day one, our goal is to encourage students to begin to think about applying what they learn to practice. We place particular emphasis on helping people to develop the ability to analyse and learn from the theory and think about how this impacts on people who use social care services.

As well as demonstrating the practical relevance of the course, this is a really important step in building student confidence and you can see the changes as people realise just what they are capable of.

We are obviously there to support our students every step of their academic journey but we believe understanding and helping with the personal challenges of taking on a course are in many ways as important as the academic support. That is why we believe so passionately in our learning being student-centred and put so much effort into building a learning community for our students. We support and learn from each other.



Congratulations



**THE SKY'S
THE LIMIT!**

IMPORTANT

All candidates must meet the requisite criteria of the Garda/Police Vetting process. Students will be required to undergo Garda Vetting. Students must complete the required documentation, including a full list of all previous addresses, in order for clearance checks to be made. Currently Irish addresses are vetted by the Garda Vetting Bureau at no cost to the student.

BACHELOR OF ARTS IN SOCIAL CARE

Social Care Workers plan and provide professional care to vulnerable individuals and groups of all ages who experience marginalisation, disadvantage or special needs. As well as protecting and advocating for such individuals and groups, Social Care Workers professionally guide, challenge and support those entrusted to their care toward achieving their fullest potential. (Social Care Ireland 2018).

The programme is designed for people who want to attain the standards of proficiency for social care workers as defined by CORU and engage in value-based education to empower service users. The learner will engage with 18 modules that explore social care practice and how it applies in various social care settings. The student will complete 800 hours of supervised practice placement, in a social care setting. The qualification is designed to lead to enable graduates register as Social Care Workers subject to CORU approval.



AUDIENCE

Any person interested in becoming a social care worker. Person with a relevant L5 qualification

FORMAT

Flexible Learning

AWARD TITLE

Bachelor of Arts in Social Care Level 7 – Major

CREDITS

60 credits per year, 180 credits overall

LOCATION OF WORKSHOPS/ LECTURES

Open Training College Online. The location of practice placements can vary

WORKSHOP (NO OF DAYS)

First year – 17 plus one exam day

APPLY BY

Contact the College

FEES

€4,992 per annum

START DATE

Sept 2023

ENTRY REQUIREMENTS

All potential applications must have successfully completed:

Leaving Certificate*, or

HET (60 credits)/QQI Level 6 Certificate, or

FET (120 credits)/QQI Level 5 Certificate,

Or be aged at least 23 years at the time of application.

Applicants whose first language is not English:

Minimum CEFR B2+ (=IELTS 6.0) or equivalent.

All applicants must also satisfactorily pass an entry interview.

All applicants must be able to gain Garda clearance.

Advanced Entry/Module Exemptions are not available to applicants for the BASC

* Leaving Certificate applicants will require a grade O6/H7 in five subjects; these subjects must include Maths and English or Irish. (Foundation level mathematics will meet the minimum entry requirement where a grade F2 or higher is achieved.)

THE COURSE AIMS:

1 To equip students with the range of skills and knowledge to enable them fulfil the role of Social Care Worker across a variety of sectors within the broad social care field.

2 To embed the values of human rights, inclusiveness, empowerment, advocacy, social justice and person-centred services and supports so that graduates can bring these values to their work across the social care sector.

3 To ensure competence to practise as a skilled and professional Social Care Worker in a variety of settings by provision of high quality practice placements.

NEXT STEPS

- **Workshop/ Webinars:** There are 18 modules overall that explore social care practice and how it applies in various social care settings. The learner will engage with 7 modules in year One, 6 modules in Year Two and 5 modules in Year Three.
- **Placement Schedule:** In Years 2 and 3, the student will complete over 800 hours of supervised practice placement, in a social care setting. Both supervised placement modules are 20 credits and run for 26 weeks each (52 weeks in total). Each week the student will attend their placement for two days / 16 hours a week.
In addition - before the placement starts, during the placement and after the placement - students will attend lectures/seminars/webinars for preparation and debriefing in relation to their placements.

HOW TO APPLY

To apply for the degree, you will need to :

- ✓ satisfy the entry requirements for the programme
- ✓ provide a range of documents to support your application
- ✓ submit a personal statement explaining why you want to apply
- ✓ Pay an application fee of €95.

Prospective students will be invited to an interview to assess suitability for the course.

KEY CONTACTS

Dr. Noelin Fox
Course Director

Conor Murray
Corporate Services
Manager

Tel: 086 0756580

Email: info@opentrainingcollege.com

Web: opentrainingcollege.com

Address: Willowfield Park, Goatstown,
Dublin 14 - D14 P9E4 - Ireland



twitter.com/myotc



facebook.com/theopentrainingcollege



linkedin.com/company/open-training-college/



OTC
OPEN TRAINING COLLEGE